

AUTHORIZED DISTRIBUTOR

CAPITAL FOODS

EMAIL: info@capitalfoods.mv

TEL: +960 3336727,

+960 7767272 | +960 7449292

mosa[®]

Enrich flavors

Mosa creates the difference that makes your kitchen fun.

With supreme quality and elegant functional design,
we bring the abundant inspiration to enrich your life.

ENRICH FLAVORS



MOSA WHIPPERS



Flavorwhip
0.25 L / 0.5 L
CCC1-02 / CCC2-02

Dessert Whipper
0.25 L / 0.5 L
CCP1-02 / CCP2-02

Thermo Whipper
0.5 L
CSS9-06

Master Whipper
0.25 L / 0.5 L / 1.0 L
CSS1-06 / CSS2-06 / CSS3-06

Culinary Whipper
0.25 L / 0.5 L
CCA1-01 / CCA2-01

MOSA SODA LINE



Soda Splash
0.75 L / 1.1 L
SSD7-06 / SSD8-06

Classic Soda Siphon
1.0 L
SSF3-06

Soda Multi
1.0 L
SSD3-06

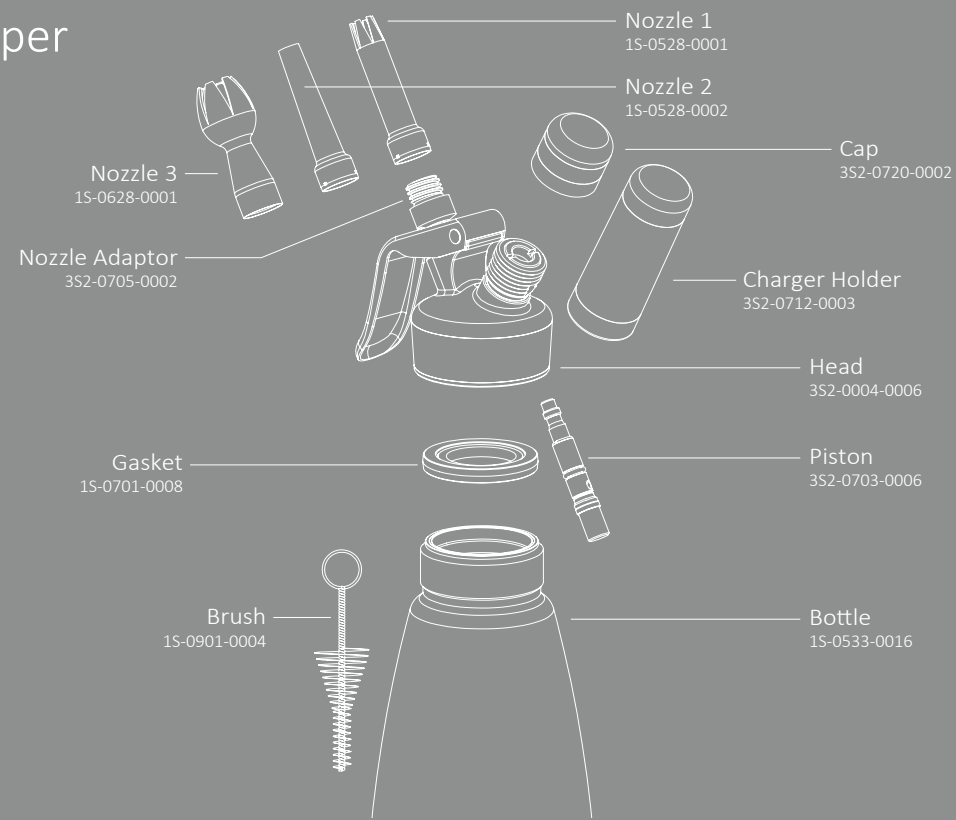


PROFESSIONAL WHIPPER
THERMO
WHIPPER



Warm & Cold
CSS9-06

Thermo Whipper Contents



Packing Specification

Cream Whippers

Item No.	Product	Capacity	Box Dimensions / mm	Color	Boxes Per Carton	Carton Dimensions / mm
CSS9-06	Thermo Whipper	0.5L	L98xW98xH305	Polished Stainless Steel	6	L318xW209xH321



Thermo Whipper

- High quality stainless steel bottle and head, designed for professional use.
- Whip fresh cream, flavored coffee toppings, delicate sauces, sweet and savory gourmet toppings, Espumas, light yogurt mousses, whipped soups, and much more.
- Double-walled bottle with advanced insulating capability to keep content warm or cold for hours.
- Versatile whipper.
- Dishwasher safe.
- TUV, NSF and Halal certified.
- 2 years warranty.



PROFESSIONAL WHIPPER
MASTER
WHIPPER



Master Whipper Contents



Packing Specification

Cream Whippers

Item No.	Product	Capacity	Box Dimensions / mm	Color	Boxes Per Carton	Carton Dimensions / mm
CSS1-06	Master Whipper	0.25L	L90×W90×H245	Polished Stainless Steel	6	L297×W194×H261
CSS2-06		0.5L	L90×W90×H315	Polished Stainless Steel	6	L297×W194×H333
CSS3-06		1.0L	L98×W98×H360	Polished Stainless Steel	6	L324×W209×H373



Master Whipper

- High quality stainless steel bottle and head, designed for professional use.
- For preparation of delicious whipped cream, mousses, desserts, Espumas, and sauces.
- Multifunctional whipper for cold and warm food applications.
- Dishwasher safe.
- TUV, NSF and Halal certified.
- 2 years warranty.



1S-0543-0001



1S-0536-0001

MOSA FUNNEL & SIEVE

- Mosa Funnel & Sieve Set is ideal for making Espumas and straining seeds and the pulp.
- High quality construction and functionality.
 - The abundant capacity of the funnel allows for easy use.
 - Sieve with convenient handle that provides a secure grip and easy operation.

Material	Stainless steel
Dimensions	Sieve ϕ 15 cm



MOSA STAINLESS STEEL NOZZLE SET

Mosa Stainless Steel Nozzles are ideal to present cream, cakes, desserts, Espumas, soups, sauces, and much more.

Material	Brush	Stainless steel+Nylon
	Tulip Nozzle	Stainless Steel
	Straight Nozzle	
	Flat Nozzle	
	Cross Nozzle	Plastic



MOSA INJECTOR TIPS

- Mosa Injector Tips are perfect for:
- Liquid injection
 - Decoration
 - Filling & stuffing food
 - Marinating

Material	Stainless steel	Stainless steel + Nylon
Type	long injector tip 5mm ϕ	Brush
	long injector tip 3mm ϕ	



MOSA CREAM CHARGERS



NN08-A1

- Mosa cream chargers are made of 100% recyclable steel. Each unit contains approx. 7.8 grams of food grade pure N₂O.
- Non-refillable.
- TUV and Halal certified.
- 1 year warranty.

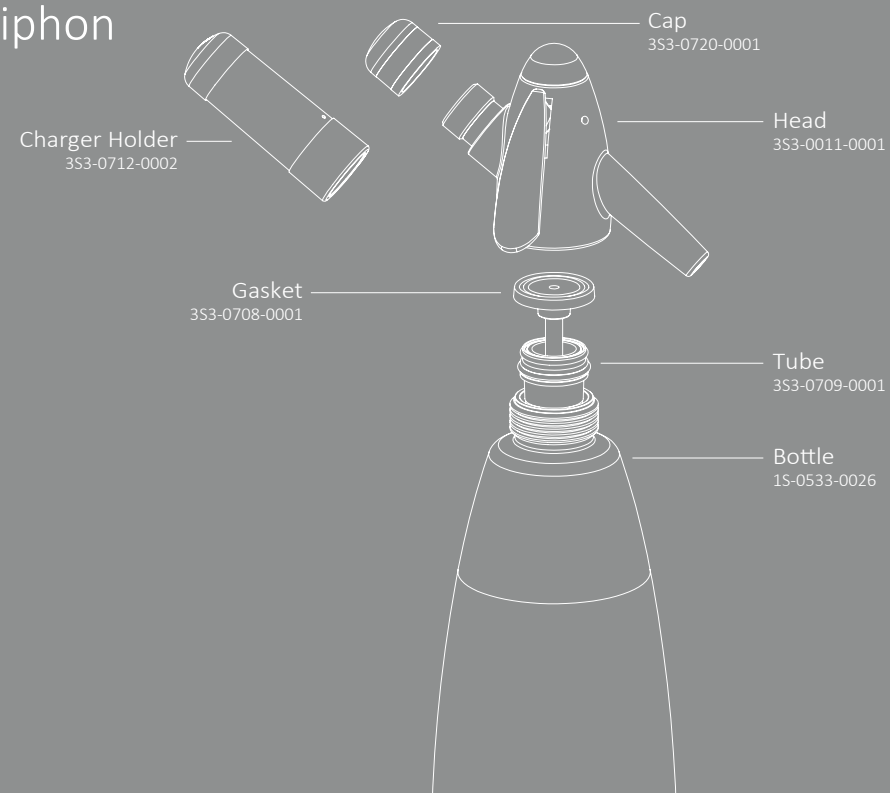
Item No.	Product	Capacity	Packing / pcs	Box Dimensions / mm	Color	Boxes Per Carton	Carton Dimensions / mm
NN08-A1	N ₂ O Charger	8g	10	L92xW36xH66	Silver	36	L239xW188xH218
NN08-A1	N ₂ O Charger	8g	24	L144.5xW54xH66	Silver	25	L355xW298xH168
NN08-A1	N ₂ O Charger	8g	50	L186xW67xH83	Silver	12	L275xW205xH290



CLASSIC SODA SIPHON



Classic Soda Siphon Contents



Packing Specification

Soda Makers

Item No.	Product	Capacity	Box Dimensions / mm	Color	Boxes Per Carton	Carton Dimensions / mm
SSF3-06	Soda Siphon	1.0L	L100×W102×H355	Polished Stainless Steel	6	L325×W210×H361



Classic Soda Siphon

Soda maker

- High quality stainless steel bottle.
- Ergonomically designed head and charger holder for smooth and convenient operation and dispensing.
- Use with refreshingly pure and cold water only!
- TUV certified.
- 2 years warranty.

CREATE YOUR DRINKS



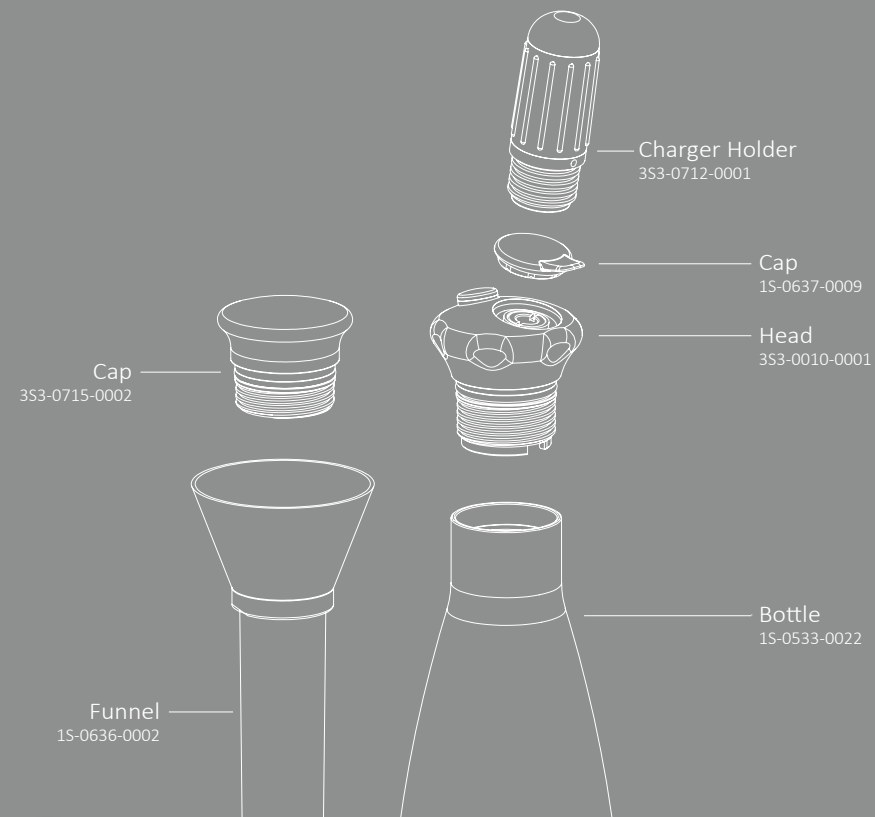


SODA SPLASH



SSD7-06

Soda Splash Contents



Packing Specification

Soda Makers

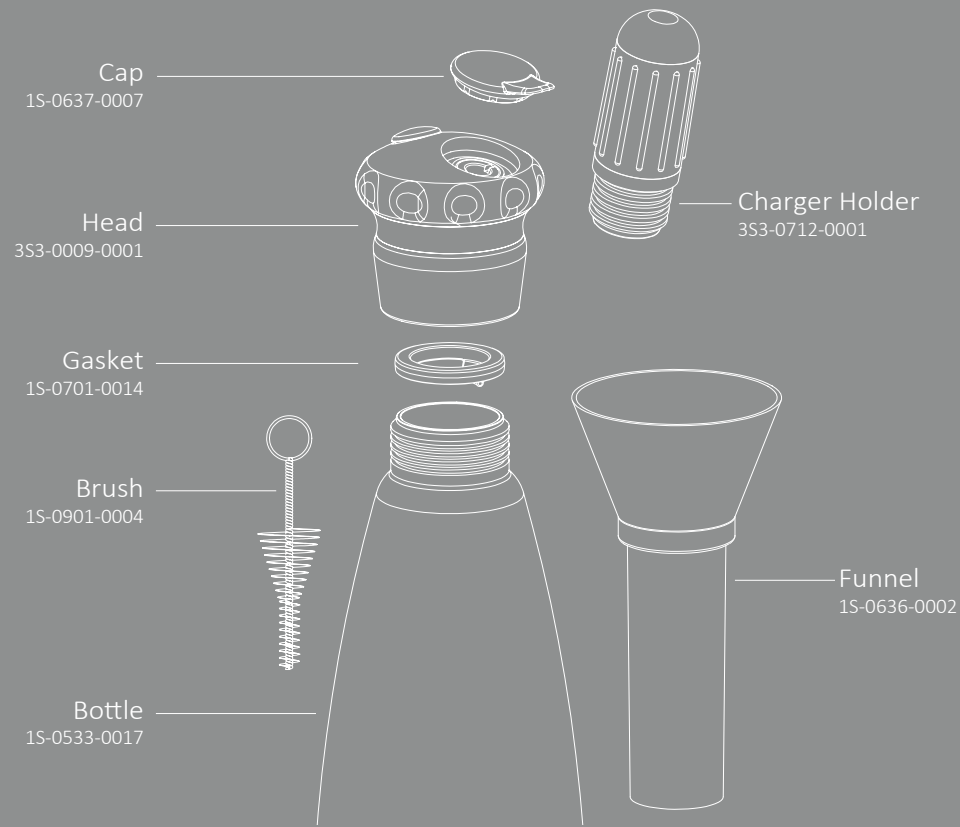
Item No.	Product	Capacity	Box Dimensions / mm	Color	Boxes Per Carton	Carton Dimensions / mm
SSD7-06	Soda Splash	0.75L	L83xW145xH320	Polished Stainless Steel	6	L312xW267xH335
SSD8-06		1.1L	L103xW145xH320	Polished Stainless Steel	6	L328xW318xH335

Soda Splash

- Soda Splash is a completely new carbonating system for the dinner table, bar or party.
- For the first time you can put sirups, fruit pieces, ice cubes, herbs, alcoholics, juices, and many more ingredients directly into the bottle then add enough cold water or wine and carbonate them all together in this ingenious cocktail maker.
- This patented Soda system allows you to make your own ice-cold cocktail, bubbly sodas or sparkling wine-mixtures in minutes.
- The unique Soda Splash has a sleek and cool design with all the new technology that you expect from this bar-whiz.
- Create your own drinks by simply filling all ingredients into the bottle, put the head on, charge it with one Soda charger and shake it well.
- After a few minutes release the excess pressure, open the bottle and pour the drink.
- Because you mix and carbonate all the liquid ingredients inside the Soda Splash you are keeping all the fizz in your drink, while other systems can loose the fizz by dispensing or mixing in a glass.
- And of course you can also just carbonate pure cold water for refreshing soda water!
- The high quality stainless steel bottle is stylish and can be cleaned in the dishwasher. All other plastic parts are easy to clean by just rinsing them with luke-warm water.
- Only use the Soda Splash with cold ingredients, always use enough water or wine to keep fruits, herb or ice cubes well immersed, do not use for mousses or thick liquids.
- The safety of the Soda Splash is certified by the German TUV!
- Halal certified.
- 2 years warranty.



Soda Multi Contents



Packing Specification

Soda Makers

Item No.	Product	Capacity	Box Dimensions / mm	Color	Boxes Per Carton	Carton Dimensions / mm
SSD3-06	Soda Multi	1.0L	L160×W100×H320	Polished Stainless Steel	6	L328×W318×H335

SODA MULTI

- The Soda Multi is a versatile kitchen device to carbonate, whip or infuse cold watery liquids.
- TUV, NSF and Halal certified.
- 2 years warranty.



SSD3-06

MOSA SODA CHARGERS

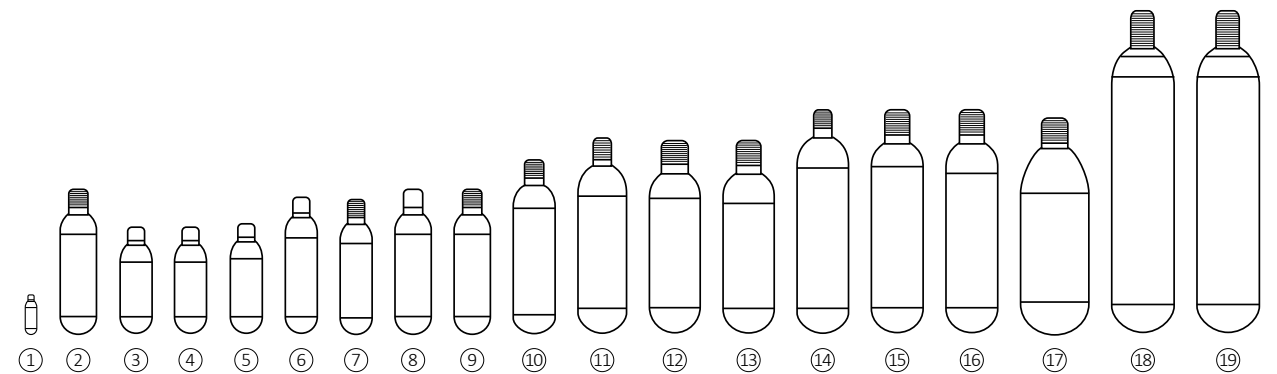
- Mosa Soda chargers are made of 100% recyclable steel. Each unit contains approx. 7.8 grams of food grade pure CO₂.
- Non-refillable.
- TUV and Halal certified.
- 1 year warranty.



CN08-A2

Item No.	Product	Capacity	Packing / pcs	Box Dimensions / mm	Color	Boxes Per Carton	Carton Dimensions / mm
CN08-A2	CO ₂ Charger	8g	10	L92xW36xH66	Gold	36	L239xW188xH218













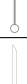


CARTRIDGE TYPES FOR SPECIAL PURPOSES



Specification table

Item No.	No. / Spec / Gas	Capacity (ml)	Length (mm)	Bottle Diameter (mm)	Thread/ Neck Diameter (mm)	Filling Ratio	Gas weight (g)	Bursting Pressure (bar)	Safety Cap Action Temp. (°C)	Before Filling (approx) (g)	After Filling (approx) (g)
ANZ1-A1	1 0.1g Ar	min 1.0	25.4	9.5	Ø7.4	-	0.1	500 above	-	4.4	4.5
AY07-B1	2 7.1g Ar	min 20.4	88.4	22	3/8"-24UNF	0.75~0.78	16	500 above	-	42	49.1
BY02-B9	3 2g N ₂	min 10.2	65.8	18	Ø8.5	0.75~0.78	8	500 above	-	22	24
NN08-A1	4 8g N ₂ O	min 10.2	65.5	18	Ø8.5	0.75~0.78	8	500 above	-	21	29
CN08-A2	5 8g CO ₂	min 10.2	65.8	18	Ø8.5	0.75~0.78	8	500 above	-	22	30
CN12-A2	6 12g CO ₂	min 14.5	83	18.6	Ø7.3	0.75~0.78	12	500 above	-	29	41
CY12-B2	7 12g CO ₂	min 14.1	82.5	18.6	3/8"-24UNF	0.75~0.78	12	500 above	-	30	42
CN16-A2	8 16g CO ₂	min 20.4	88.4	22	Ø8.6	0.75~0.78	16	500 above	-	42	58
CY16-B2	9 16g CO ₂	min 20.4	88.4	22	3/8"-24UNF	0.75~0.78	16	500 above	-	42	58
CY25-B2	10 25g CO ₂	min 31.8	107.6	25	3/8"-24UNF	0.75~0.78	25	500 above	-	79	104
CY38-B2	11 38g CO ₂	min 52	119.7	30	3/8"-24UNF	0.73	38	500 above	-	104	142
CY38-D2	12 38g CO ₂	min 52	119	30	5/8"-18UNF	0.73	38	500 above	105	108	146
CY38-C2	13 38g CO ₂	min 52	119.5	30	1/2"-20UNF	0.73	38	500 above	105	104	142
CY45-B2	14 45g CO ₂	min 60	138	30	3/8"-24UNF	0.75	45	500 above	-	121	166
CY45-D2	15 45g CO ₂	min 60	138	30	5/8"-18UNF	0.75	45	500 above	105	125	170
CY45-C2	16 45g CO ₂	min 60	138	30	1/2"-20UNF	0.75	45	500 above	105	123	168
CY67-D2	17 67g CO ₂	min 95	133	39.8	5/8"-20UN	0.71	67	500 above	105	203	270
CY88-D2	18 88g CO ₂	min 120	200	35	5/8"-18UNF	0.73	88	500 above	105	282	370
CY88-E2	19 88g CO ₂	min 120	200	35	M16 x 1.5	0.73	88	500 above	105	282	370

Accessories

	Item No.	Item Description	Packing (pcs)	Carton Dimensions (mm)
	4S2-0711-0004	Nozzle Set Hang Card	5-in-1 Hang Card 30 / carton	300×300×250
	4S2-0711-0005	Injector Set Hang Card	3-in-1 Hang Card 30 / carton	300×300×250
	4S2-0711-0006	Sieve Funnel	2-in-1 Box 230 x 230 x 200 4 / carton	470×410×250
	1S-0901-0004	Brush (Short)	50	
	3S2-0712-0003	Charger Holder, Zinc Alloy (Red)	50	
	3S2-0712-0004	Charger Holder, Zinc Alloy (Blue)	50	
	3S2-0712-0006	Charger Holder, Zinc Alloy (Black)	50	
	1S-0628-0001	Nozzle, Tulip (White)	100	
	1S-0628-0003	Nozzle, Straight (White)	100	
	1S-0628-0005	Nozzle, Cross (White)	100	
	1S-0517-0005	Charger Holder, Aluminum	50	
	1S-0617-0004	Charger Holder, Plastic (White)	50	
	1S-0617-0009	Charger Holder, FW	50	
	3S3-0712-0001	Charger Holder, Plastic (Blue)	50	
	3S3-0712-0002	Charger Holder, Plastic (Blue)	50	
	1S-0901-0005	Brush (Long)	50	
	1S-0528-0005	Injector Tip φ5	50	
	1S-0528-0004	Injector Tip φ3	50	

AUTHORIZED DISTRIBUTOR

CAPITAL FOODS

EMAIL: info@capitalfoods.mv
 TEL: +960 3336727,
 +960 7767272 | +960 7449292